



ClearCut Raman Scattering Suppressor Fiber Bragg Grating (RSS-FBG Series)

Rev 11E

Description

The Raman Scattering Suppressor ClearCut Fiber Bragg Grating products are ultra low insertion loss fiber bragg gratings for high power fiber lasers. With AFR's ClearCut designing and special process, the devices can handle kilowatt level pump power and signal power with recoated only. It is the only cost-effective solution that eliminates the SRS at its source and enables immunity from back reflection from the work piece.

Key Features

- High Power Handling
- Low Temperature Slope
- Exceptional Reliability

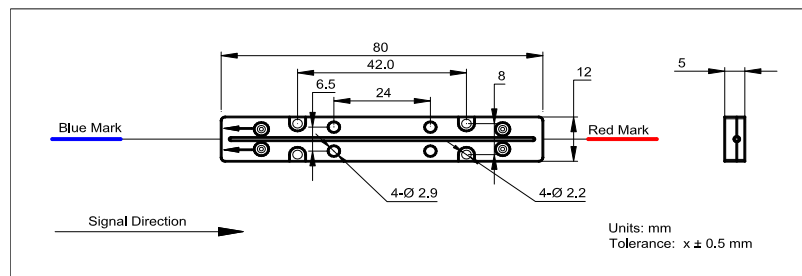
Applications

- Fiber Laser

Specifications

Parameter	Unit	Value			
Passband Center Wavelength	nm	1070			1080
RSS Wavelength	nm	1123			1132
Tolerance on RSS Center Wavelength	nm			2	
Bandwidth of RSS Wavelength at 95%	nm			≥ 20	
Max. Insertion Loss (Passband Center Wavelength)	dB			0.2	
Min. Attenuation (RSS Wavelength)	dB			20	
Min. Return loss (RSS Wavelength)	dB			25	
Fiber Core Dimension	μm	10	14	20	25
Max. Core Signal Power Handling	W	300	2000	3000	4000
Max. Core RSS Power Handling	W	3	20	30	40
Fiber Cladding Dimension	μm	125		250	400
Max. Clad Pump Power Handling	W	300		2000	3000
Package Dimensions	mm	80 (L) × 12 (W) × 5 (H)			
Storage Temperature	°C	- 40 to + 85			

Package Dimensions



Ordering Information

TFBG-①①①①-②②②②-③-④④/④④④-P⑤⑤⑤⑤-⑥

①①①①: RSS Wavelength

1132 - 1132 nm

SSSS - Specify

②②②②: Passband Center Wavelength

1080 - 1080 nm

SSSS - Specify

③: Fiber Type

N - Non-PM

P - PM

④④/④④④: Fiber Core/Cladding Dimension

20/400 - 20 μ m/400 μ m

SS/SSS - Specify

⑤⑤⑤⑤: Signal Power Handling

3000 - 3000 W

SSSS - Specify

⑥: Pigtails Length (Each Side)

A - 1 m B - 1.2 m C - 1.4 m

S - Specify (\leq 1.7 m)

¹ClearCut is a product trade mark of AFR representing an unique technology used in its FBG products.